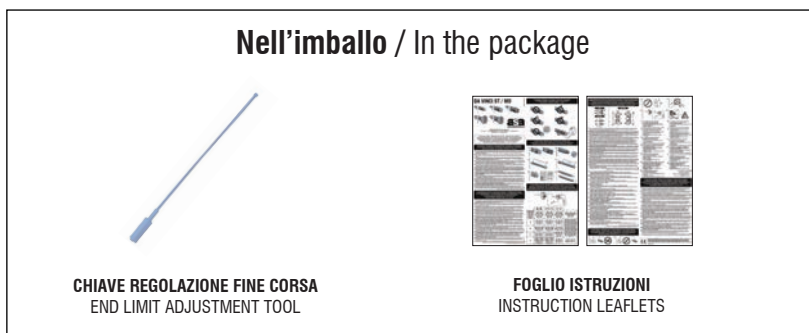


Motore tubolare con finecorsa meccanico filare e manovra di soccorso idoneo per applicazioni su tende da sole e tapparelle.
Tubular motor with mechanical end limit switch and manual override suitable for awnings and rolling shutters.

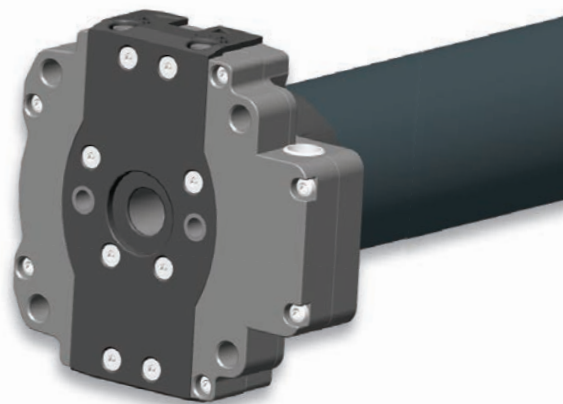
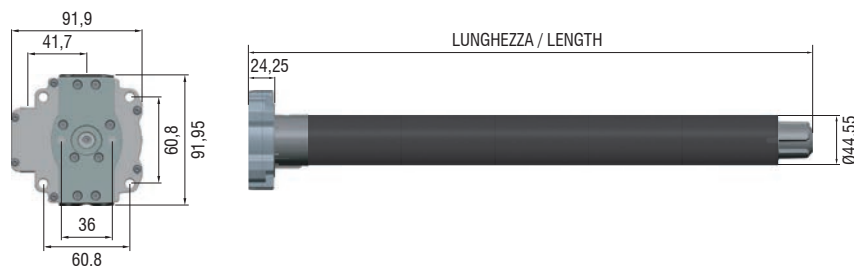
CONFIGURAZIONE IMBALLO / PACKAGE CONFIGURATION:



- Imballo singolo brand ASA / Single package ASA branded
- Motore con manovra di soccorso / Motor with manual override
- Chiave regolazione finecorsa / End limit adjustment tool
- Foglio istruzioni brand ASA / Instruction leaflets ASA branded

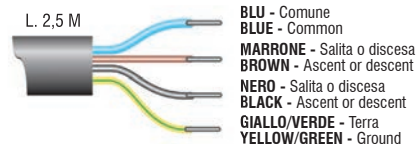
(I) (GB) (F) (D) (E) (P) (PL) (H) (NL) (RO) (GR) (CZ) (TR) (SA)

DIMENSIONI MOTORE / MOTOR DIMENSIONS:



CARATTERISTICHE TECNICHE / TECHNICAL FEATURES:

- Alimentazione / Power supply: 230 V ~ / 50 Hz
- Tipologia cavo / Cable type: H05 VVF 4 x 0,75 Bianco / White - Lunghezza / Length 2,5 m
- Grado di protezione / Protection rating: IP44
- Certificazioni / Certifications: CE - VDE - NF
- Made in Italy



CODICE CODE	DESCRIZIONE DESCRIPTION	COPPIA TORQUE	VELOCITÀ SPEED	GIRI FC LS ROUNDS	ASSORBIMENTO CONSUMPTION	LUNGHEZZA LENGTH	PESO MOTORE MOTOR WEIGHT
2241565	DAVINCI 50 MO 10/17 G1 A1 B1	10 Nm	17 Rpm	28	120 W	614 mm	2,47 Kg
2243681	DAVINCI 50 MO 20/17 G1 A1 B1	20 Nm	17 Rpm	28	190 W	614 mm	2,57 Kg
2244138	DAVINCI 50 MO 25/17 G1 A1 B1	25 Nm	17 Rpm	28	200 W	614 mm	2,62 Kg
2245538	DAVINCI 50 MO 30/17 G1 A1 B1	30 Nm	17 Rpm	28	240 W	614 mm	2,67 Kg
2246146	DAVINCI 50 MO 35/17 G1 A1 B1	35 Nm	17 Rpm	28	240 W	614 mm	2,67 Kg
2247456	DAVINCI 50 MO 40/17 G1 A1 B1	40 Nm	17 Rpm	28	240 W	614 mm	2,67 Kg
2248102	DAVINCI 50 MO 45/12 G1 A1 B1	45 Nm	12 Rpm	28	240 W	614 mm	2,67 Kg
2249453	DAVINCI 50 MO 50/12 G1 A1 B1	50 Nm	12 Rpm	28	240 W	614 mm	2,67 Kg